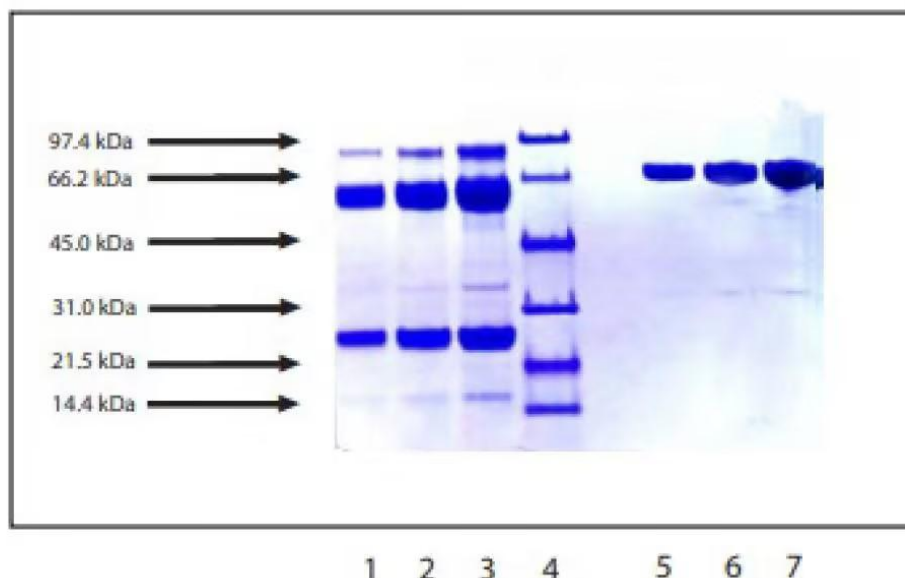


Gel Scan of Representative Lot
Plasmin, Human Plasma, Frozen
No.np001029



SDS-PAGE:

4-12% Bis-Tris NuPAGE gel

1. Plasmin - 5 µg(Reduced/heat)
2. Plasmin - 10 µg(Reduced/heat)
3. Plasmin - 20 µg(Reduced/heat)
4. LMW Standard
5. Plasmin - 5 µg(non-Reduced/no heat)
6. Plasmin - 10 µg(non-Reduced/no heat)
7. Plasmin - 20 µg(non-Reduced/no heat)

Molecular Weight: 81,000

Considerations:

Storage Conditions: $\leq -80^{\circ}\text{C}$; Stability > 1 year

Buffer: 100 mM NaP04, pH 7.3, with 1 mM 6-aminohexanoic acid and 25% glycerol

Activity:One unit is defined as the amount of enzyme that hydrolyzes one umole of tosyl-Gly-Pro-Lys-pNA per minute at 25°C ; pH 7.8: One Unit=1.25 CU

Physical Specifications:Frozen; Purity: $\geq 90\%$ by SDS-PAGE

Product Datasheet

Product: Plasmin, Human Plasma, Frozen

Number: np001029

Description: Frozen

Buffer: 100 mM NaPO₄, pH 7.3, with 1 mM 6-aminohexanoic acid and 25% glycerol

Purity: >=90% by SDS-PAGE

Molecular Weight: MW 81,000

Storage: <= -80°C

Stability: >1 year

Available Packaging: 1mg per via

Source: Human Plasma

Testing: Shown to be non-reactive for HBsAg, anti-HCV, anti-HBc, and negative for anti-HIV 1 & 2 by FDA required tests.

Certificate Of Origin

Product Name: Plasmin, Human Plasma, Frozen

SaturatedCatalog Number: np001029

Lot Number: Information applies to all lots produced.

Manufacturing Information: The methods and controls used in this facility for manufacturing, processing, packaging and holding of our products are in accordance with ISO9001:2015 Quality Management System.

Raw Material Information: The product contains no materials directly of animal origin and has not been in contact with products of animal origin in the course of its purification.

Country of Origin (manufacturing): United States

Biological Source Material (COO): United States

Donor Consent: The raw material used in the purification of this product has been obtained from an FDA licensed collection center. Further the donor or the donor's next of kin has given by signature full informed consent for the material to be used in commercial scientific research, including the sharing, transferring, or selling of samples to third parties involved in this research. The raw material was obtained in an ethical manner in full compliance with national legislation, and the donor identity is held as confidential information by the licensed collection center.